

2 POWER CONNECTION DETAIL
E4.01 NOT TO SCALE

GENERAL NOTES:

- SEE MECHANICAL DRAWINGS FOR KITCHEN HOOD SCHEDULE. ELECTRICAL CONTRACTOR TO MAKE FINAL CONNECTIONS TO EXHAUST FAN, LIGHT, & SWITCHES.
- PROVIDE SEAL-TITE FLEX ON ALL DELI/BAKERY EQUIPMENT/CASES: 3 FT. (MIN.) ON FLOOR CIRCUITS AND 4 FT. (MIN.) ON WALL CIRCUITS.
- ELECTRICAL CONTRACTOR SHALL PROVIDE ALL CONTROL WIRING FOR SHUNT TRIP SYSTEM AT EXHAUST HOOD AND EQUIPMENT.
- PROVIDE 1"-0" OF FLEX CONDUIT AND A 2"x4" BOX WITH A DUPLEX RECEPTACLE.
- (1) 4-CONDUCTOR SHIELDED CABLE (#22 AWG OR LARGER)
(2) CONDUCTOR (BLACK & WHITE) - FOR TEMPERATURE SENSOR, INDICATED AS:
(2) CONDUCTOR (RED & GREEN) - FOR DEFROST TERMINATION, INDICATED AS:
- DIMENSIONS ARE SHOWN FROM INTERIOR SURFACE OF EXTERIOR MASONRY BUILDING WALLS.
- MOUNT FLY TRAPS AT 5'-0" ABOVE THE FINISHED FLOOR IN THE DELI/BAKERY AND PRODUCE PREP.
- SEE SHEET E1.02 FOR TELEPOLE INFORMATION.
- ALL ELECTRICAL WIRING WILL BE DONE IN STRICT ACCORDANCE WITH THE N.E.C. NO COLOR CHANGES IN WIRE RUNS, MISLABELED CIRCUITS, ETC. ALL WIRING SHALL BE DONE IN ACCORDANCE WITH FOOD LION STANDARDS. ONLY NEAT, FIRST QUALITY WORK WILL BE ALLOWED. 8. ALL BRANCH CIRCUIT PANELBOARDS SHALL BE VACUUMED. ALL ELECTRICAL ENCLOSURE COVERS SHALL BE INSTALLED AND ADEQUATELY SECURED TO OBTAIN PROJECT CLOSE OUT.
- ALL BRANCH CIRCUIT PANELBOARDS, SAFETY DISCONNECTS, ELECTRICAL DISTRIBUTION EQUIPMENT, MAIN BREAKERS, AND MAIN SERVICE DISCONNECTS SHALL BE LABELED WITH PHENOLIC TAGS, BLACK ON WHITE, 1.5" TALL. DISTRIBUTION SECTIONS SHALL BE LABELED ACCORDING TO ARC FLASH LABELS.
- THE ELECTRICAL CONTRACTOR SHALL PROVIDE AND INSTALL CORRECTED TYPE WRITTEN PANEL SCHEDULES IN ELECTRICAL PANELS, NEW AND EXISTING, AT THE END OF THE PROJECT. HAND WRITTEN SCHEDULES SHALL BE MAINTAINED THROUGHOUT THE PROJECT.
- SCALES SHALL BE FED FROM A CIRCUIT THAT IS CONTINUOUSLY ENERGIZED (NOT CONTROLLED BY THE ENERGY MGMT SYSTEM)
- COORDINATE REMOVAL/REPLACEMENT OF REFRIGERATED CASES WITH THE REFRIGERATION CONTRACTOR AND THE FOOD LION CONSTRUCTION SUPERVISOR.

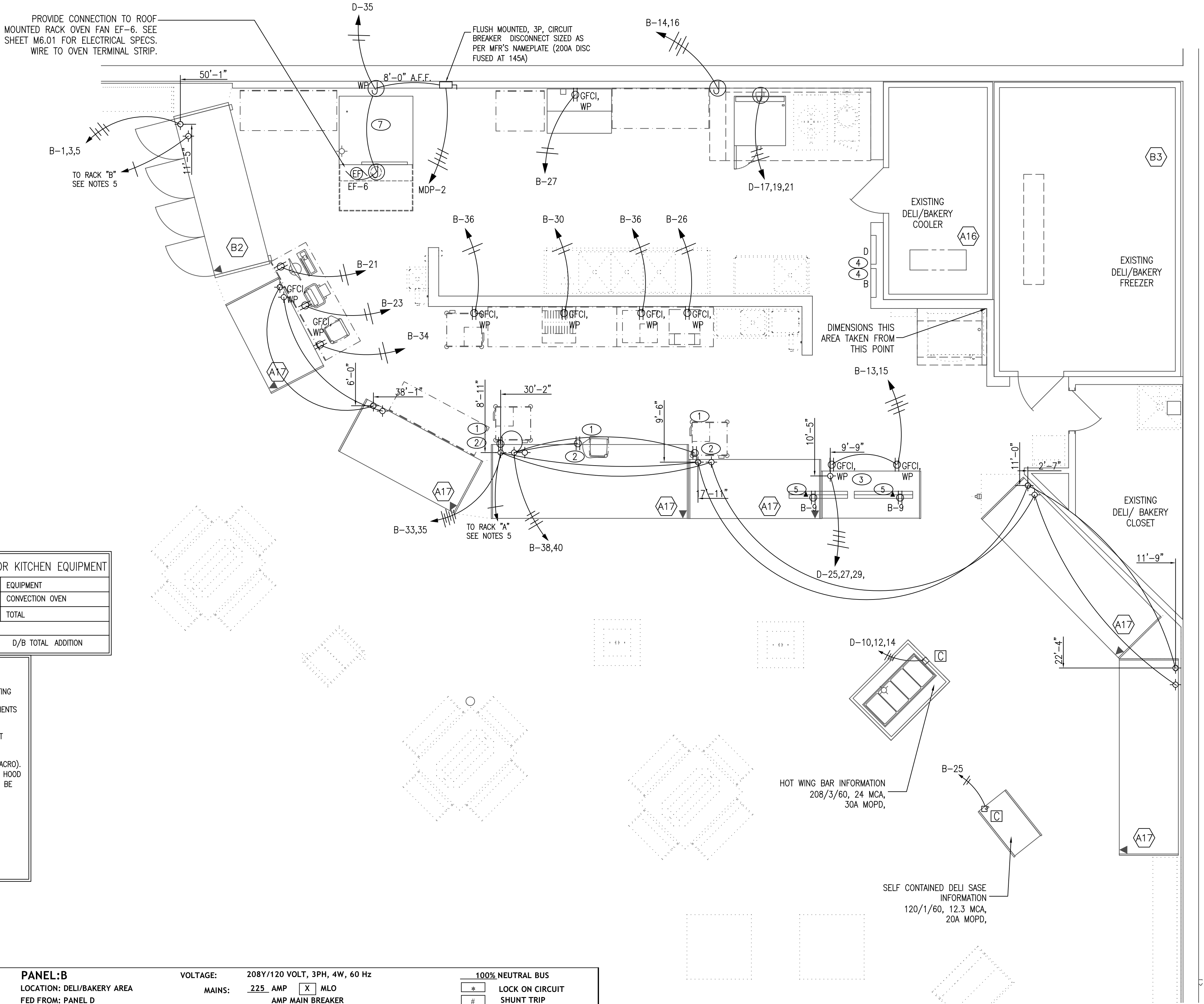
LEGEND:

- WP JUNCTION BOX
GFI GROUND FAULT INTERRUPTING RECEPTACLE
IG ISOLATED GROUND RECEPTACLE
SPECIAL USE RECEPTACLE: VOLTAGE, PHASE AND AMPERAGE BASED ON LOAD SERVED. COORDINATE NEMA CONFIGURATION WITH EQUIPMENT REQUIREMENTS.
FLOOR STUB UP
DISCONNECT SWITCH-TYPE AS NOTED
ELECTRICAL CONNECTION UNDER CASE
ELECTRICAL DROP FROM OVERHEAD
EXISTING ELECTRICAL STUB-UP
REFRIGERATION CIRCUIT NUMBER
POWER POLE (SEE GENERAL NOTE #17)
SCALE SYSTEM DATA PORT (SEE SCALE SYSTEM NOTES)
ELECTRICAL CONNECTION UNDER CASE. REUSE EXISTING STUBS WHERE POSSIBLE. COORDINATE CONDUIT ROUTING WITH THE FOOD LION CONSTRUCTION SUPERVISOR.

ADDED DEMAND FOR KITCHEN EQUIPMENT	
VOLTAMPS	EQUIPMENT
11,160	CONVECTION OVEN
11,160	TOTAL
X.70	
7,812	D/B TOTAL ADDITION

DELI/BAKERY POWER PLAN KEY NOTES

- EXISTING EQUIPMENT - RELOCATED. PROVIDE NEW CONNECTION AS REQUIRED AND EXTEND EXISTING CIRCUITRY. FIELD VERIFY CONDITIONS AND EXTENT OF WORK.
- SERVICE COLD DELI CASE, RECEPTACLES, GFCI, WP, PROVIDED WITH CASE. COORDINATE REQUIREMENTS AND CONDUIT ROUTING WITH CASE INSTALLATION.
- HOT CASE: 208V, 3PH, 31.2A
- EXISTING PANEL SCHEDULE IS INCORRECT, RECONNECT CIRCUITS TO RELOCATED EQUIPMENT SHIFT EXISTING BREAKERS AS REQUIRED TO FIT NEW LOADS IN PANELS
- RECEPTACLE AND COMMUNICATION CONNECTION FOR DELI MONITOR MOUNTED IN CEILING TILE, COORDINATE EXACT LOCATION. CAT-5e COMMUNICATION CABLES TO BE PROVIDED BY OTHERS (MACRO).
- ELECTRICAL CONTRACTOR SHALL REPLACE SEAL TIGHT FLEXIBLE CONDUIT AND FITTINGS FOR D/B HOOD ON ROOF. (SEAL-TITE TYPE FLEX IS SPECIFIED, USE PROPER METAL FITTINGS) IF EQUIPMENT TO BE REUSED AFTER REMODEL
- RACK OVEN: 208V, 3PH, FLA=113A, MCA=145A



PANEL: D										VOLTAGE: 208Y/120 VOLT, 3PH, 4W, 60 Hz										100% NEUTRAL BUS																																																																																																																																																																																																																																																																																																																																																																																																																																																																																																																																																																																																																																																																																																																																																																																																																																																																																																																																																																																																																																																																																																																																																																																																																																																																																																																																																																																																																																																																																																																																																																																																																																																																																																																																																																																																																																																																																																																																																																																																																																																																																																																																																																																																																																																																																																																																																																																																																																																																																																																																																																																																																																																																																																																																																																																																																																																																																																																																																																																																																																																																																																																																																																																																																																																																																																																																																																																																																																																																																																																																																																																																																																																																																																																																																																																																																																																																																																																																																																																																																																																																																																																																																																																																																																																																																																																																																																																																																																																																																																																																																																																																																																																																																																																																																																																																																																																																																																																																																																																																																																																																																																																																																																																																																																																																													
LOCATION: DELI/BAKERY AREA										MAINS: 400 AMP [X] MLO										[X] LOCK ON CIRCUIT																																																																																																																																																																																																																																																																																																																																																																																																																																																																																																																																																																																																																																																																																																																																																																																																																																																																																																																																																																																																																																																																																																																																																																																																																																																																																																																																																																																																																																																																																																																																																																																																																																																																																																																																																																																																																																																																																																																																																																																																																																																																																																																																																																																																																																																																																																																																																																																																																																																																																																																																																																																																																																																																																																																																																																																																																																																																																																																																																																																																																																																																																																																																																																																																																																																																																																																																																																																																																																																																																																																																																																																																																																																																																																																																																																																																																																																																																																																																																																																																																																																																																																																																																																																																																																																																																																																																																																																																																																																																																																																																																																																																																																																																																																																																																																																																																																																																																																																																																																																																																																																																																																																																																																																																																																																																													
FED FROM: MDP-2										AMP MAIN BREAKER										SHUNT TRIP																																																																																																																																																																																																																																																																																																																																																																																																																																																																																																																																																																																																																																																																																																																																																																																																																																																																																																																																																																																																																																																																																																																																																																																																																																																																																																																																																																																																																																																																																																																																																																																																																																																																																																																																																																																																																																																																																																																																																																																																																																																																																																																																																																																																																																																																																																																																																																																																																																																																																																																																																																																																																																																																																																																																																																																																																																																																																																																																																																																																																																																																																																																																																																																																																																																																																																																																																																																																																																																																																																																																																																																																																																																																																																																																																																																																																																																																																																																																																																																																																																																																																																																																																																																																																																																																																																																																																																																																																																																																																																																																																																																																																																																																																																																																																																																																																																																																																																																																																																																																																																																																																																																																																																																																																																																																													
MOUNTING: [] UNITIZED SWITCHGEAR [X] FLUSH [] SURFACE										MINIMUM AIC RATING: 65 KA																																																																																																																																																																																																																																																																																																																																																																																																																																																																																																																																																																																																																																																																																																																																																																																																																																																																																																																																																																																																																																																																																																																																																																																																																																																																																																																																																																																																																																																																																																																																																																																																																																																																																																																																																																																																																																																																																																																																																																																																																																																																																																																																																																																																																																																																																																																																																																																																																																																																																																																																																																																																																																																																																																																																																																																																																																																																																																																																																																																																																																																																																																																																																																																																																																																																																																																																																																																																																																																																																																																																																																																																																																																																																																																																																																																																																																																																																																																																																																																																																																																																																																																																																																																																																																																																																																																																																																																																																																																																																																																																																																																																																																																																																																																																																																																																																																																																																																																																																																																																																																																																																																																																																																																																																																																																																							
DEVICE										BRANCH CIRCUIT										BRANCH CIRCUIT										DEVICE																																																																																																																																																																																																																																																																																																																																																																																																																																																																																																																																																																																																																																																																																																																																																																																																																																																																																																																																																																																																																																																																																																																																																																																																																																																																																																																																																																																																																																																																																																																																																																																																																																																																																																																																																																																																																																																																																																																																																																																																																																																																																																																																																																																																																																																																																																																																																																																																																																																																																																																																																																																																																																																																																																																																																																																																																																																																																																																																																																																																																																																																																																																																																																																																																																																																																																																																																																																																																																																																																																																																																																																																																																																																																																																																																																																																																																																																																																																																																																																																																																																																																																																																																																																																																																																																																																																																																																																																																																																																																																																																																																																																																																																																																																																																																																																																																																																																																																																																																																																																																																																																																																																																																																																																																																																																			
										DESIGNATION										VOLT-AMPS										NO.										PHASE LOAD (VOLT-AMPS)										NO.										VOLT-AMPS										DESIGNATION										POLES										AMP TRIP										WIRE SIZE										COND SIZE										EIMS LOAD																																																																																																																																																																																																																																																																																																																																																																																																																																																																																																																																																																																																																																																																																																																																																																																																																																																																																																																																																																																																																																																																																																																																																																																																																																																																																																																																																																																																																																																																																																																																																																																																																																																																																																																																																																																																																																																																																																																																																																																																																																																																																																																																																																																																																																																																																																																																																																																																																																																																																																																																																																																																																																																																																																																																																																																																																																																																																																																																																																																																																																																																																																																																																																																																																																																																																																																																																																																																																																																																																																																																																																																																																																																																																																																																																																																																																																																																																																																																																																																																																																																																																																																																																																																																																																																																																																																																																																																																																																																																																																																																																																																																																																																																																																																																																																																																																																																																																																																																																																																																																																																																																																																																																																									